

L'accesso in single sign-on con autenticazione multifattore ai servizi digitali, il workspace personalizzato e la sicurezza zero-trust

Massimiliano Grassi
Marketing Manager

Aldo Amati
Lead Sales Engineer

Daniele Bartolini
Lead Sales Engineer

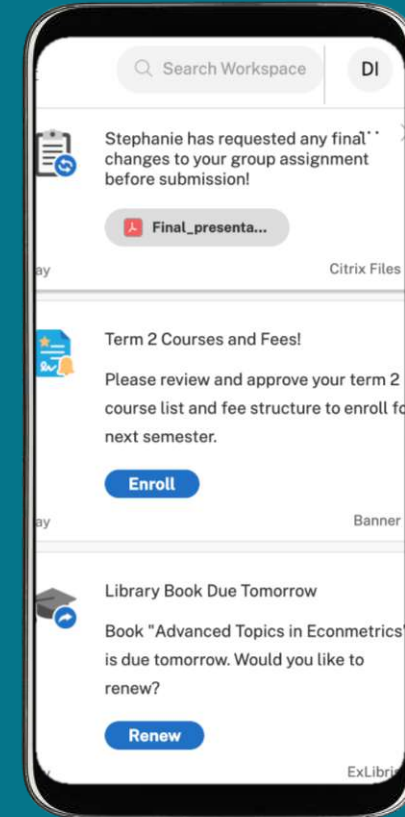
citrix

March 31, 2021

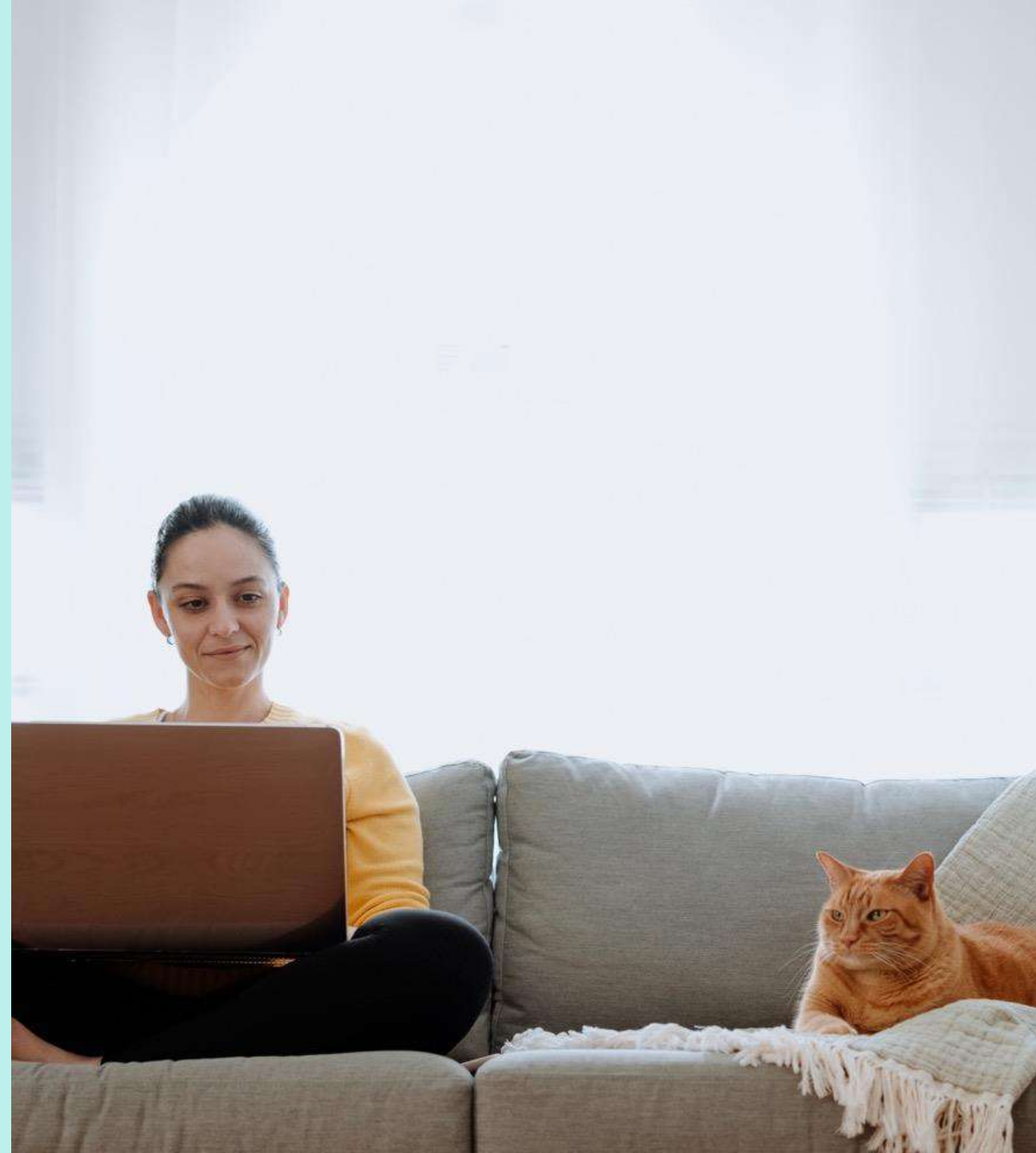


AGENDA

- Introduction
 - Reputation
 - Resilience
 - Rationalization
- Challenge
- Why Citrix
- Zero Trust
- Demo
- References
- Q&A



Providing a safe place
to work and learn...
...wherever you are



The three Rs



Reputation



Resilience



Rationalisation

Reputation

Attracting students

Attracting talent

Sustainability

Technology Enhanced Learning

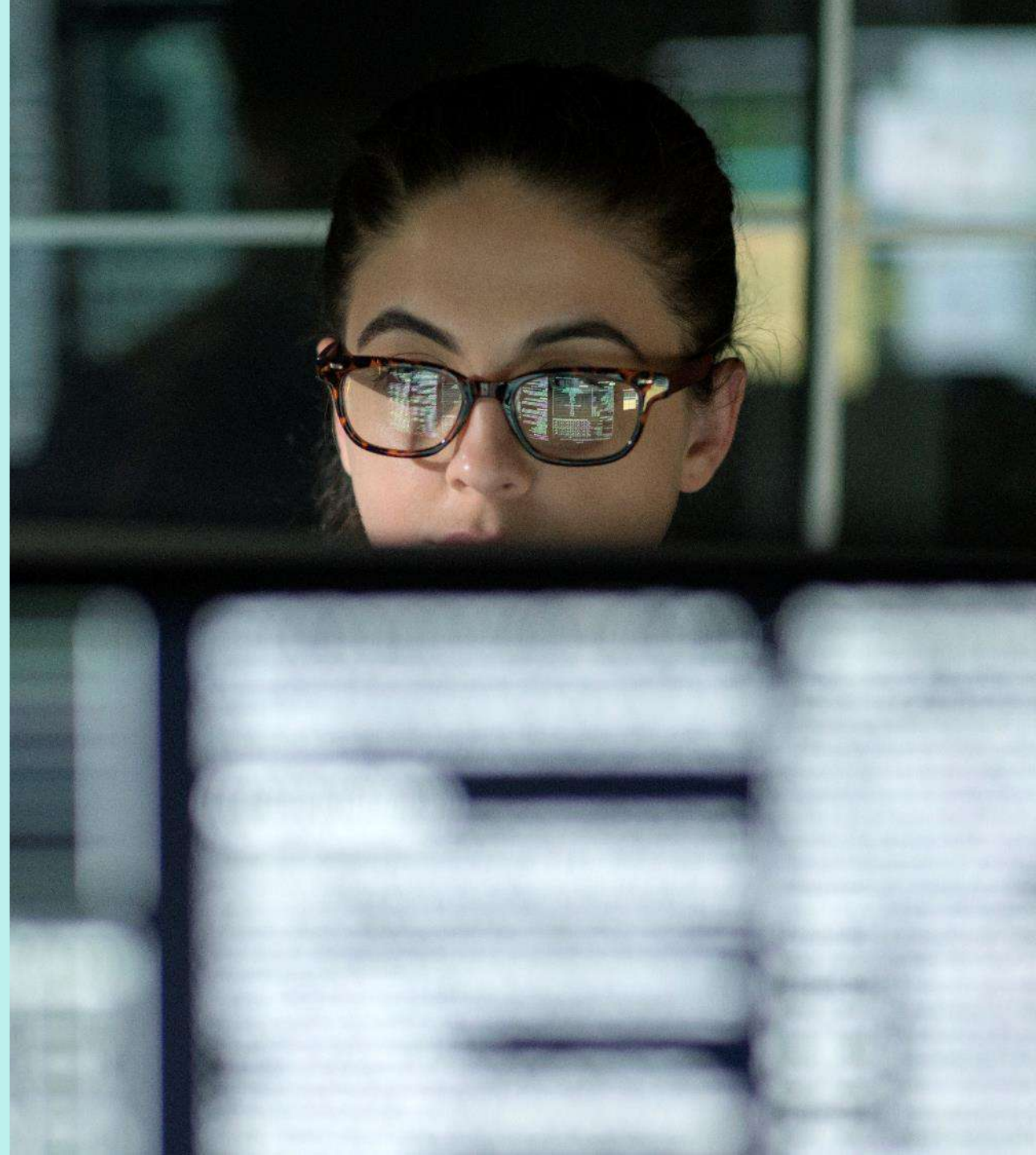


Resilience

Continuity

Data Protection

BYOD



Rationalisation

Small margins

Legacy and shadow IT

Real estate



The typical university

Multiple campuses



5-10 campuses
Thousands of
students and staff

Thousands of staff



Thousands of own devices



Complex desktop estate



Global reach



Students everywhere
Great source of income

Specialist use cases

Engineering | Design |
Complex research



High graphics courses

The problem

Full remote learning

Complex

Security risk

Hard to manage

Impossible to secure

Complex use cases/
research remotely



The typical university

Multiple campuses



5-10 campuses
Thousands of
students and staff

Global reach



Students everywhere
Great source of income

Thousands of own devices



Complex desktop estate



Specialist use cases

Engineering | Design |
Complex research



HPC
High CPU

High graphics courses

Thousands of staff



The problem

Full remote learning

Complex

Security risk

Hard to manage

Impossible to secure

Complex use cases/
research remotely

The typical university

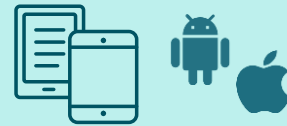
Multiple campuses



Global reach



Thousands of own devices



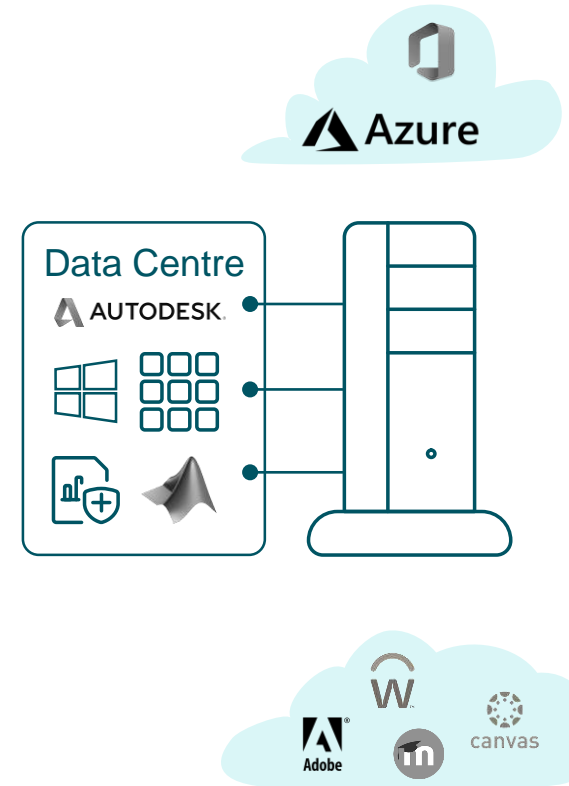
Complex desktop estate



Specialist use cases



Thousands of staff



The typical university

Multiple campuses



Global reach



Thousands of own devices



Complex desktop estate



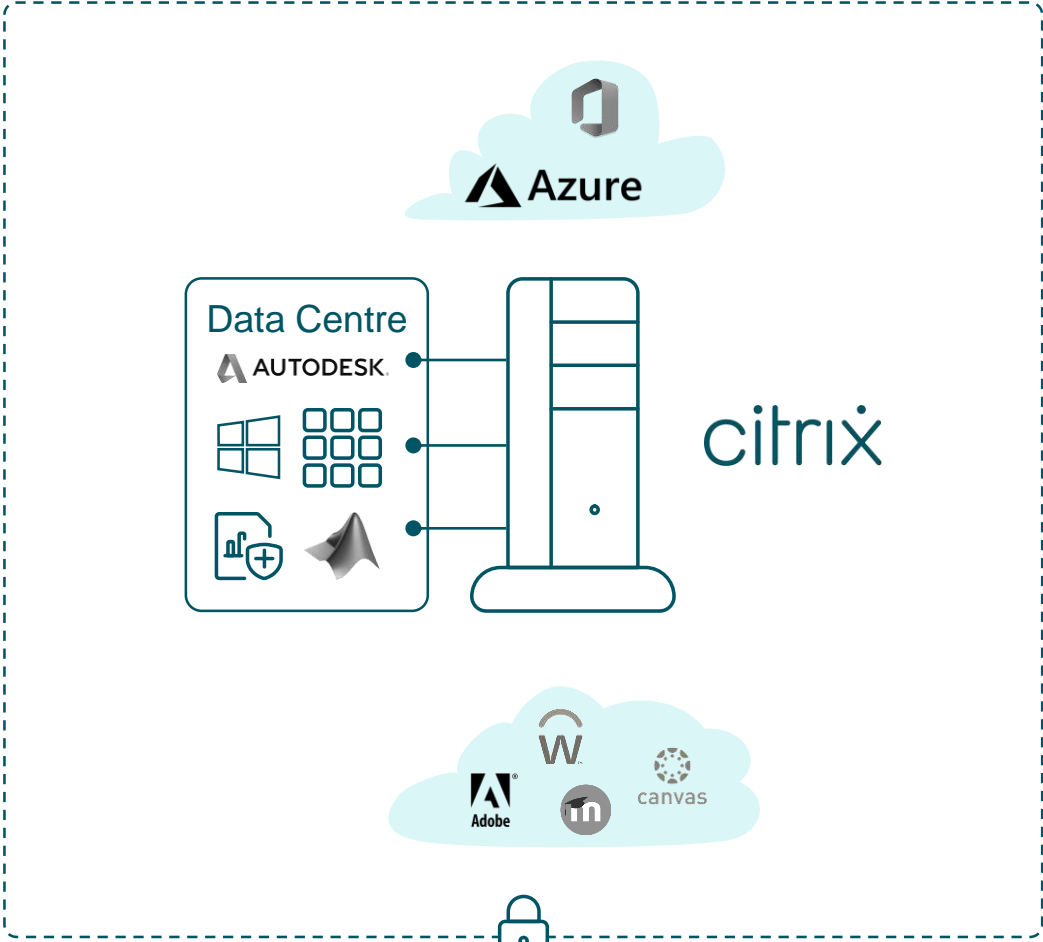
Specialist use cases



Thousands of staff



What does Citrix do?



citrix university



citrix

The typical university

Multiple campuses



Global reach



Thousands of own devices



Complex desktop estate



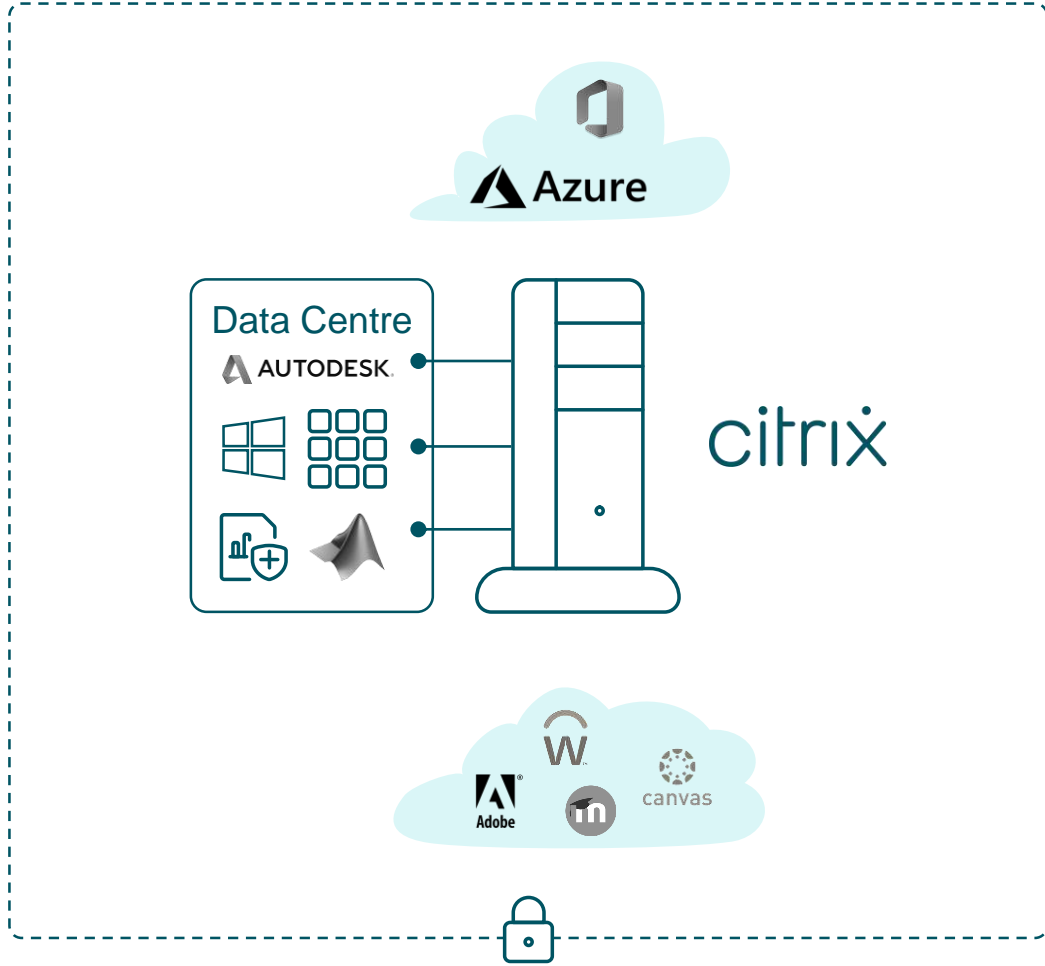
Specialist use cases



Thousands of staff



What does Citrix do?

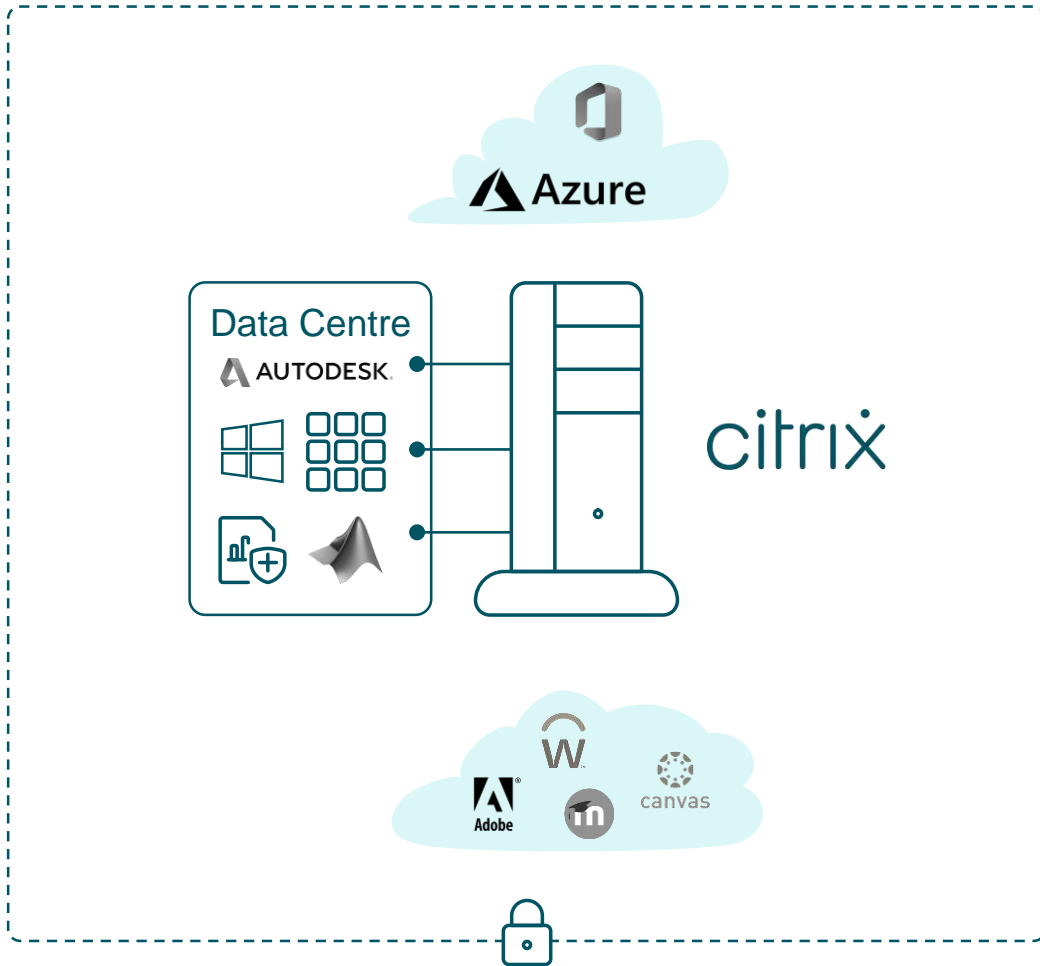


citrix university



citrix

What does Citrix do?



citrix university



Benefits

Secure

Consistent experience

Access to high graphics use cases

Easy to onboard students

Allows full UYOD

Repurpose existing hardware

Improve staff & student productivity

Easier to manage

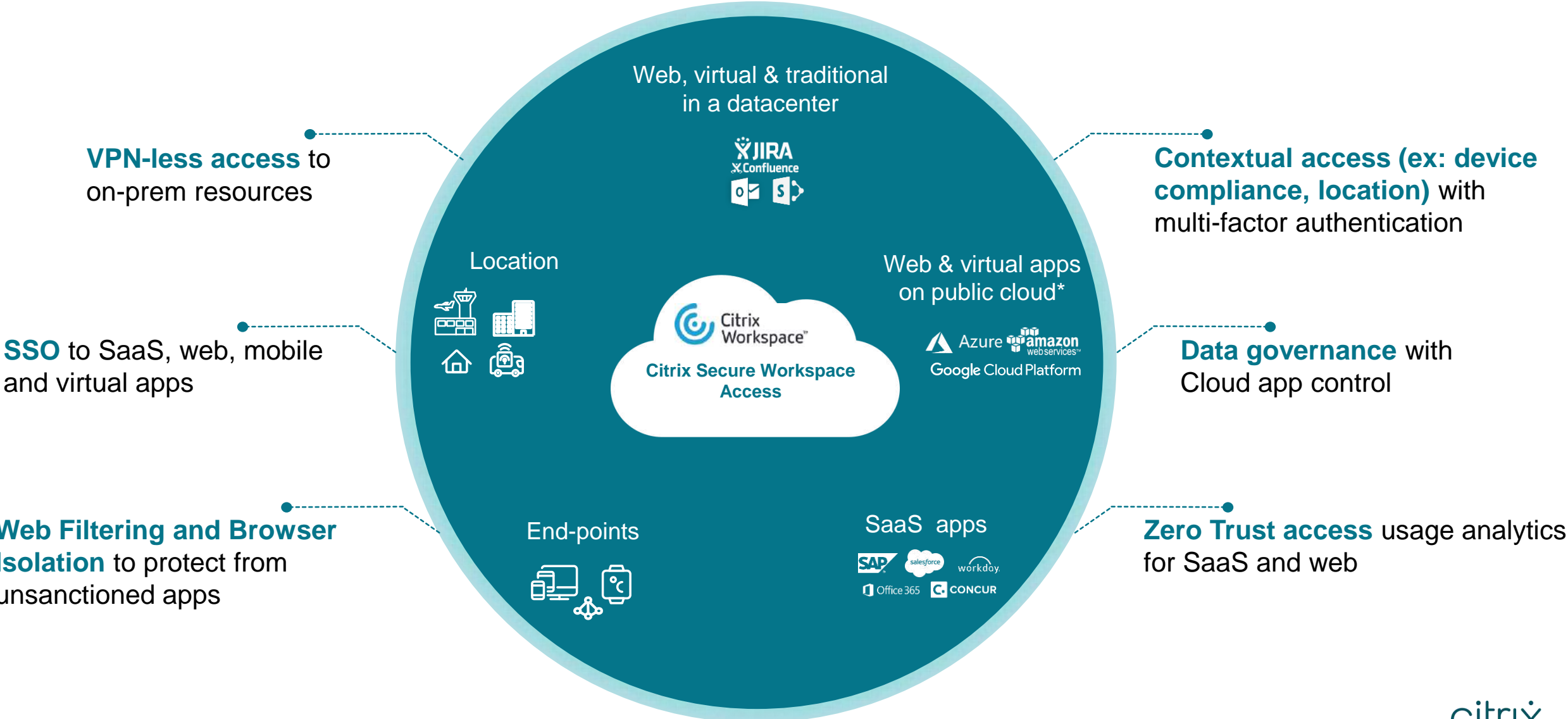
Deliver Sustainable Workspaces

Utilise existing devices

Less CapEx refresh

Redeployment of IT resources

Workspace Access – Zero Trust for all apps



Greater control

Greater security

Greater agility



Low power.
Low maintenance.
Low cost



DEMO



Who we work with
Politecnico di Milano

“Citrix si è dimostrata competente e disponibile, due valori critici in un progetto di questa complessità.”

Fabrizio Pedranzini

Manager, Information and Communication
Technologies



POLITECNICO
MILANO 1863



Who we work with

Università degli Studi di Brescia/Spedali Civili

“Prima di scegliere Citrix abbiamo effettuato una selezione ed un confronto con altri vendor. Nel riscontrare che Citrix fosse decisamente più avanti per quanto riguarda le funzionalità e le modalità di gestione amministrativa e sistemistica, abbiamo anche appurato, in collaborazione con la struttura informatica di Spedali civili, che la sua tecnologia si adattava meglio all’infrastruttura di rete ospedaliera.”

Andrea Marinoni

Responsabile ICT



UNIVERSITÀ
DEGLI STUDI
DI BRESCIA



Who we work with
Consorzio Universitario di Pordenone

“Come ci aspettavamo le problematiche didattiche sono molto diverse di quelle aziendali e ci è capitato di rilevare e risolvere esigenze sconosciute in azienda”

Andrea Zanni
Direttore IT



Prossimi incontri Citrix per



mercoledì 14 Aprile 2021 – ore 11:00 – 12:00

“La gestione delle esercitazioni e delle sessioni di esame: sicurezza e modalità ottimizzate di erogazione”

mercoledì 12 Maggio – ore 11:00 – 12:00

“La protezione delle informazioni sensibili e la sicurezza dei servizi esposti e di tutte le tipologie di applicazioni”

mercoledì 28 Aprile – ore 11:00 – 12:00

“I laboratori virtuali: modalità di realizzazione, con gestione sicura e estensione farm e servizi su sistemi cloud”

mercoledì 26 Maggio – ore 11:00 – 12:00

“Gli atenei always-on e la creazione di servizi periferici di utilità pubblica”

Dettagli e abstract: <https://www.fondazionecriui.it/webinar-ict-2021/>

Iscrizioni: <https://bit.ly/3bUrGBr>

Q&A